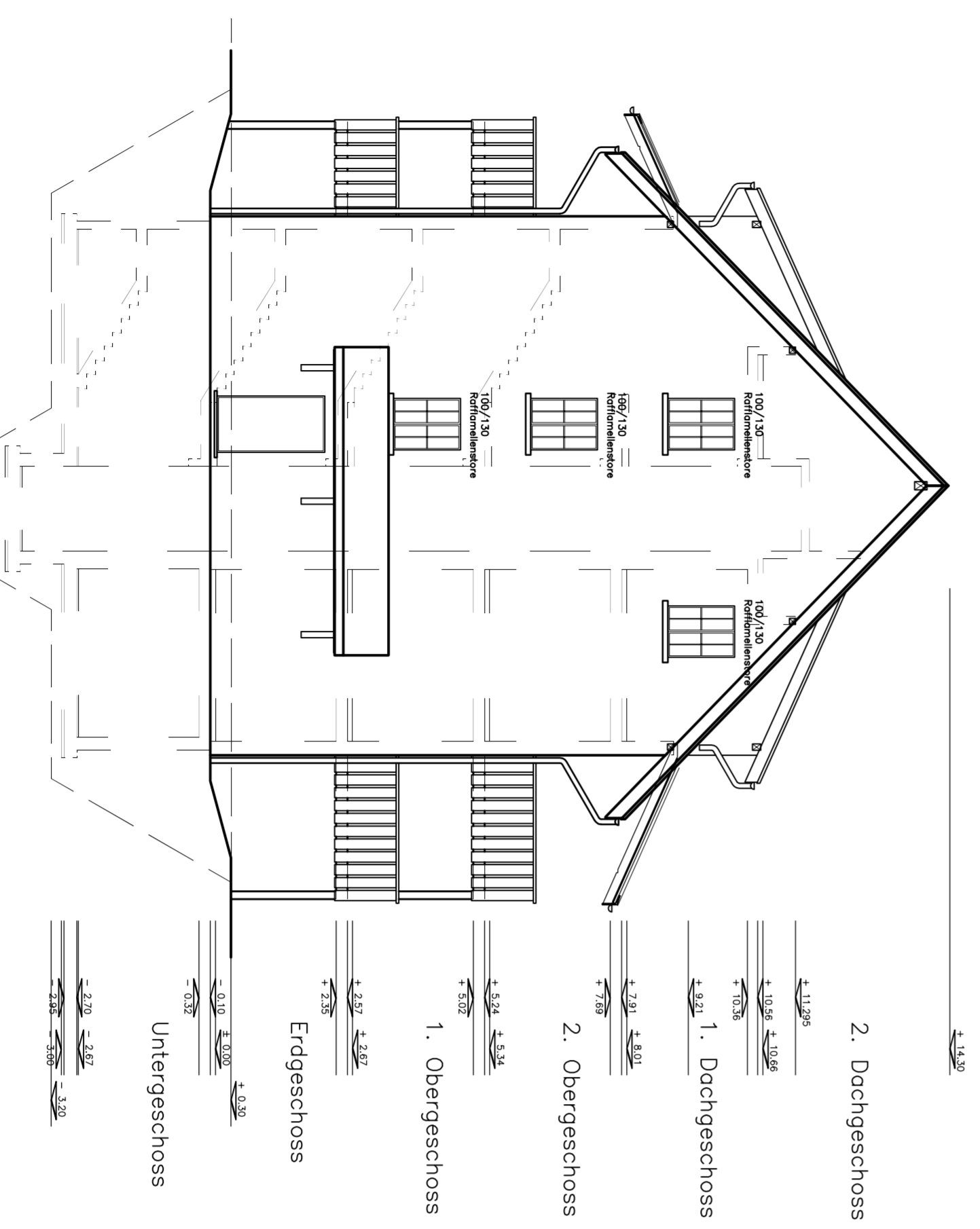
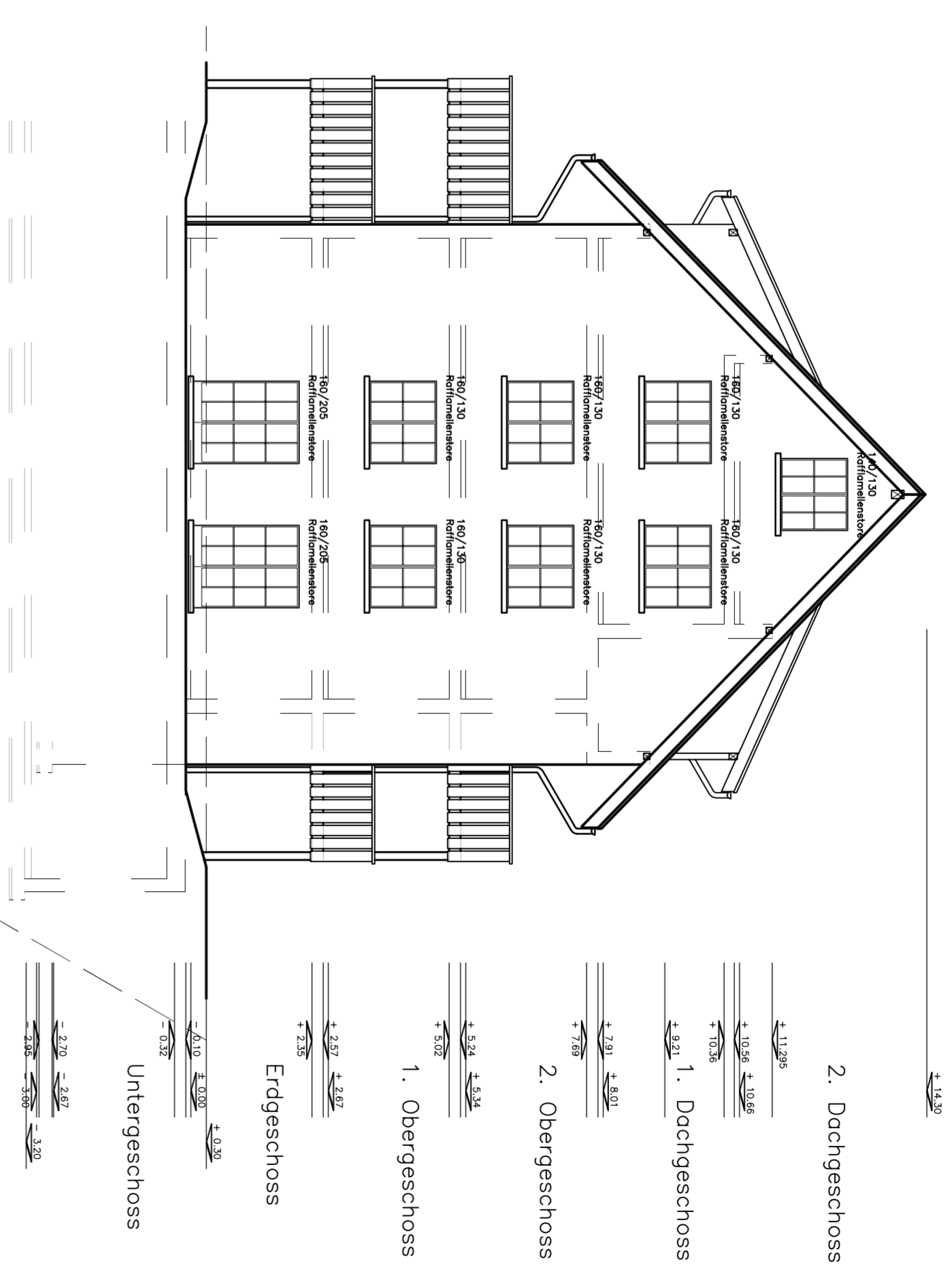


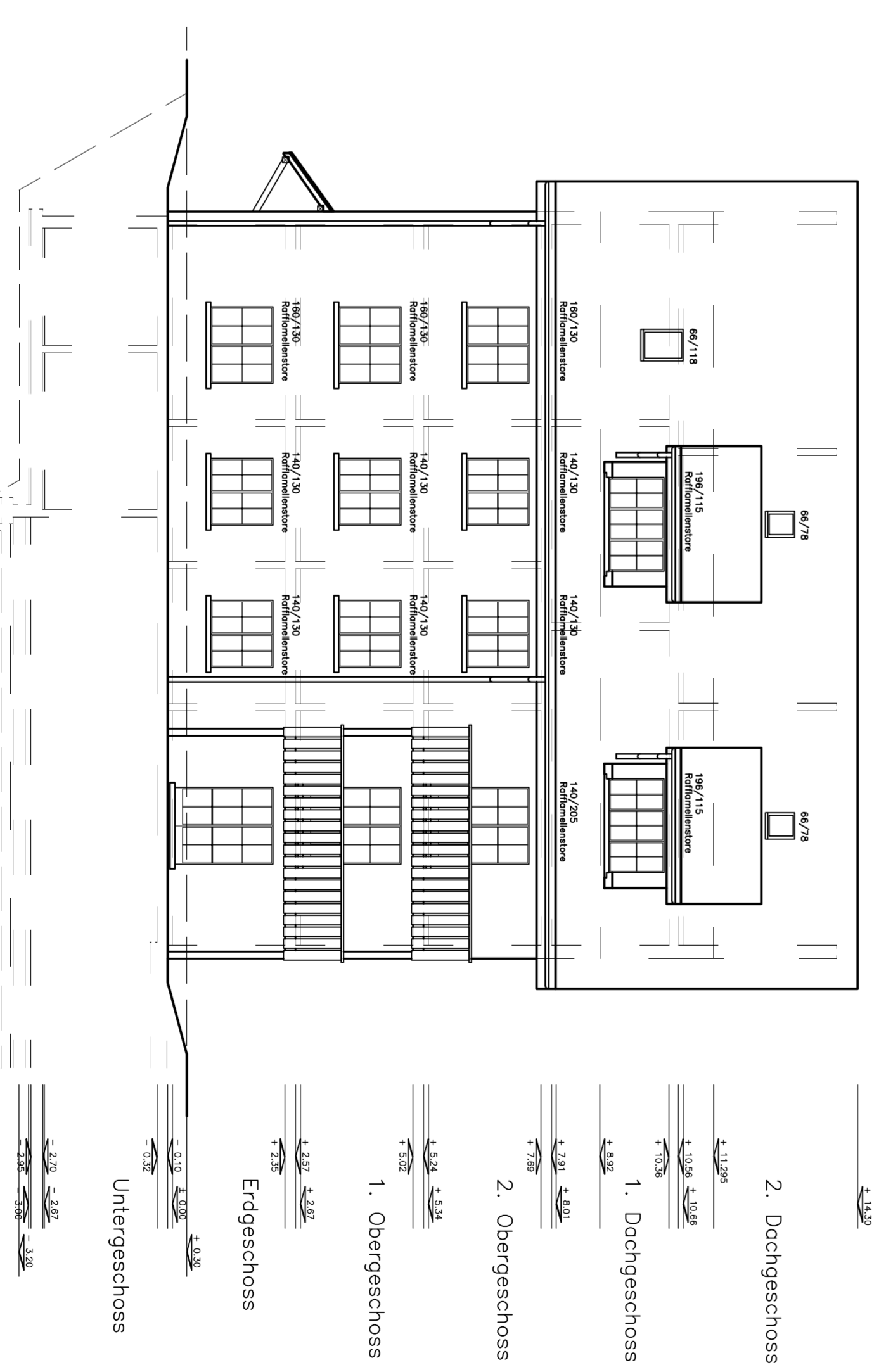
Westfassade



Südfassade



Nordfassade



Ostfassade

± 0.00 = 390.75 m.ü.m

Bauherr: Architekt:

baugesuch	Datum	20. 4. 05
Fassaden Haus A	Masstab	1 : 100
MFH Mitteldorf Remigen	Format	84 x 60
Remo Beratungs AG, Rütliweg 24, 5200 Brugg 3	Gerechtigt	mueller