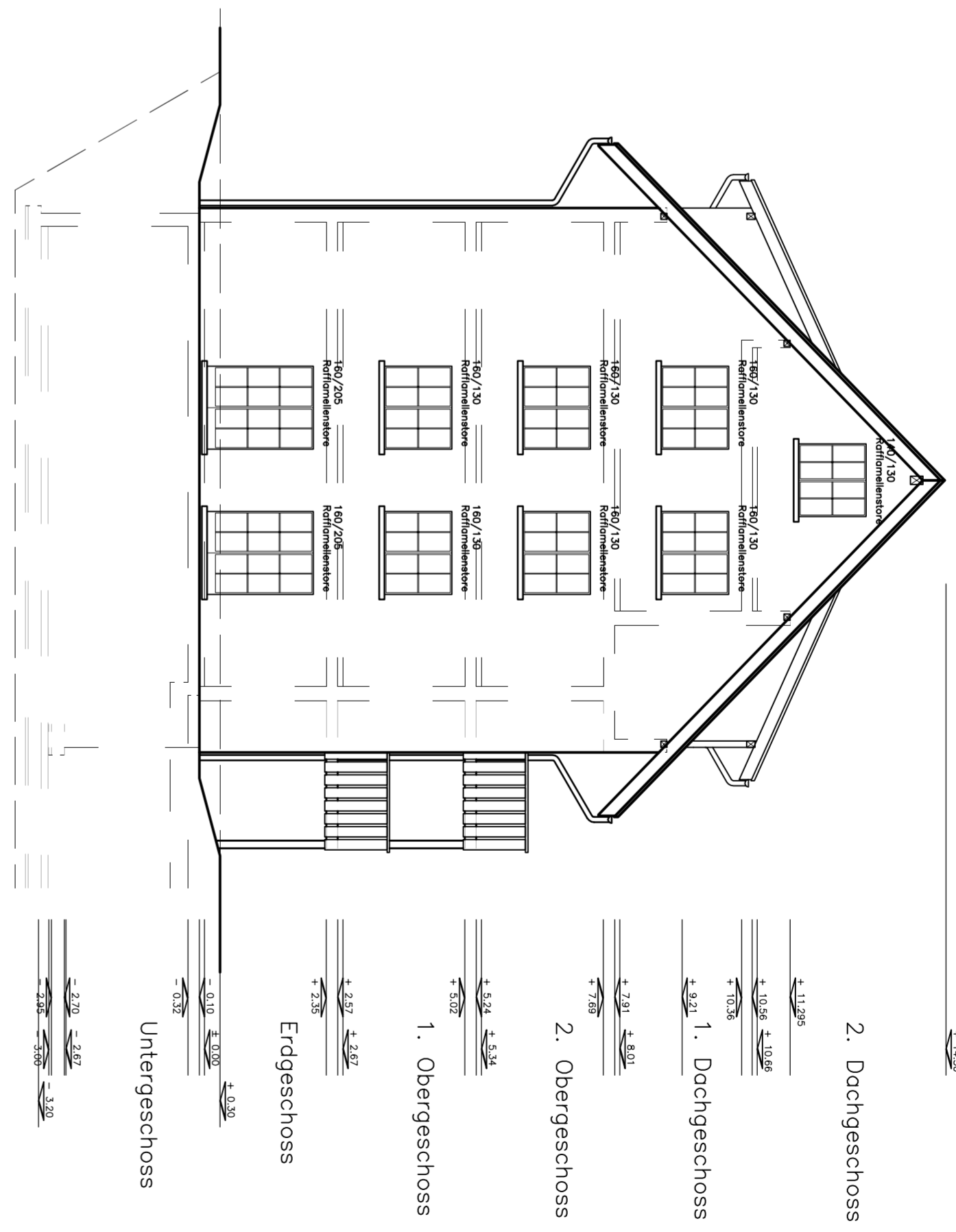
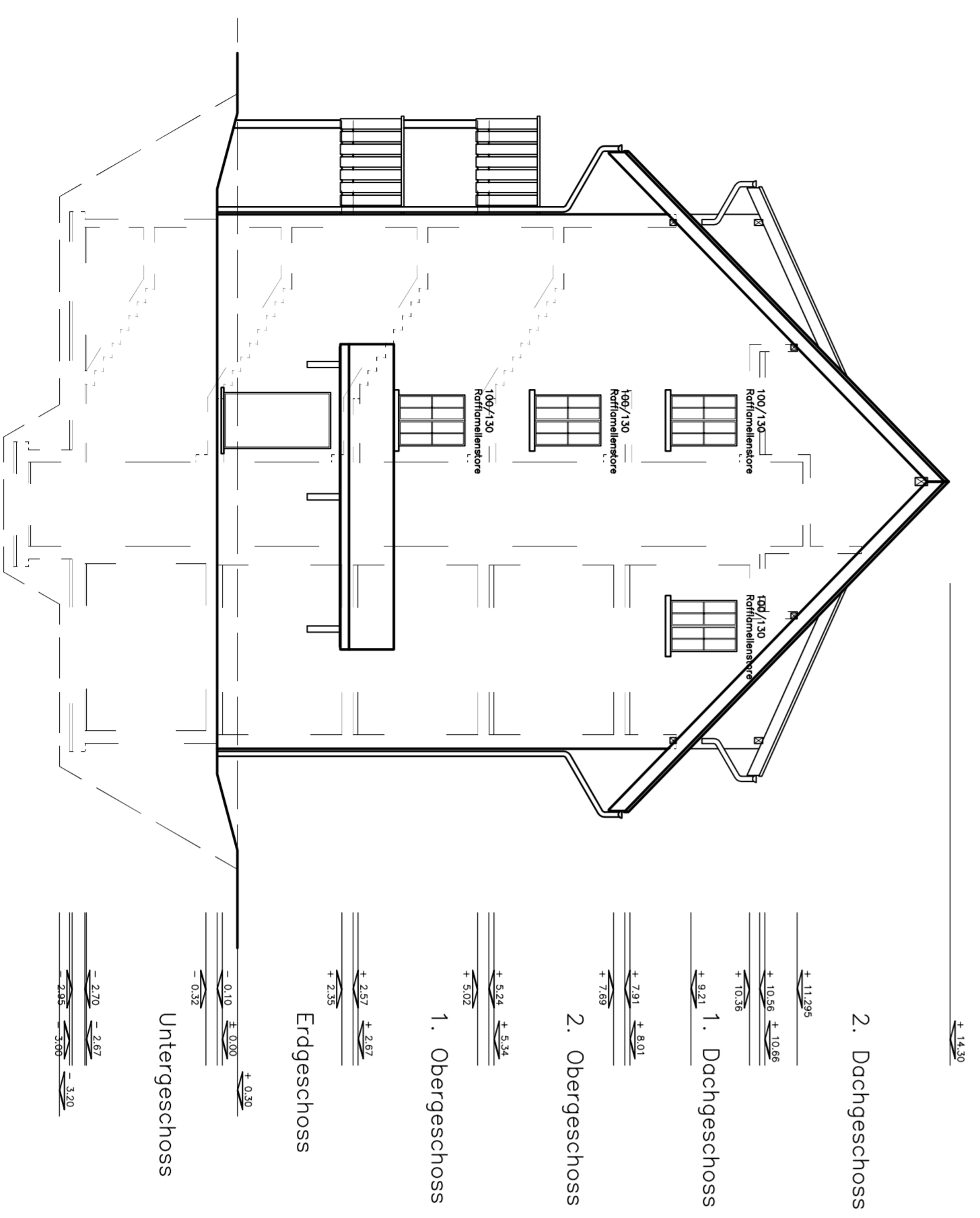


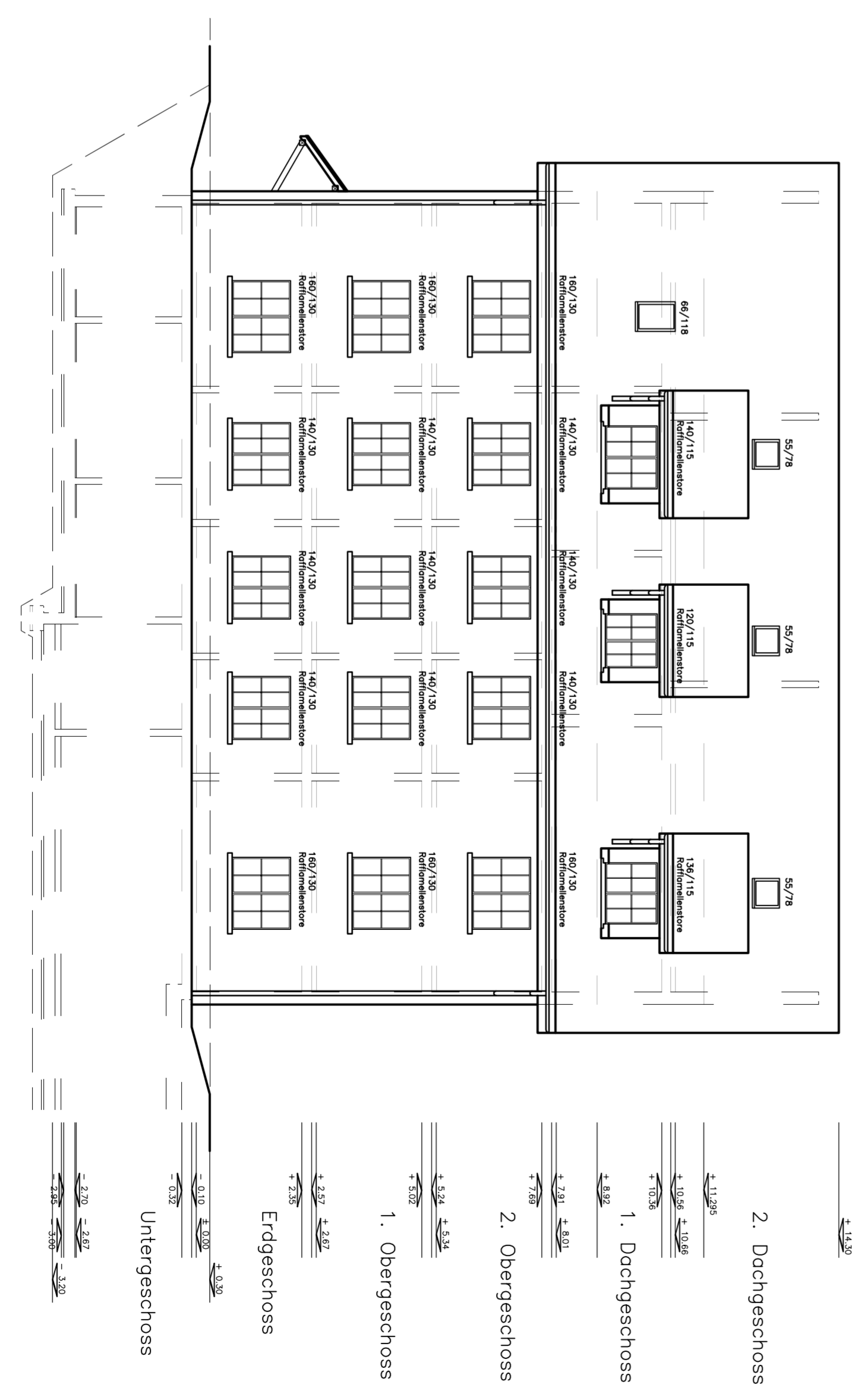
Südfassade



Westfassade



Ostfassade



Nordfassade

± 0.00 = 390.95 m.ü.m

Bauherr:

Architekt:

baugesucht	Datum	19. 4. 05
Fassaden Haus B		
Masstab	1 : 100	
Format	84 x 60	
Geszeichnet	mueller	
Remo Beratungs AG, Rütliweg 24, 5200 Brugg 3		